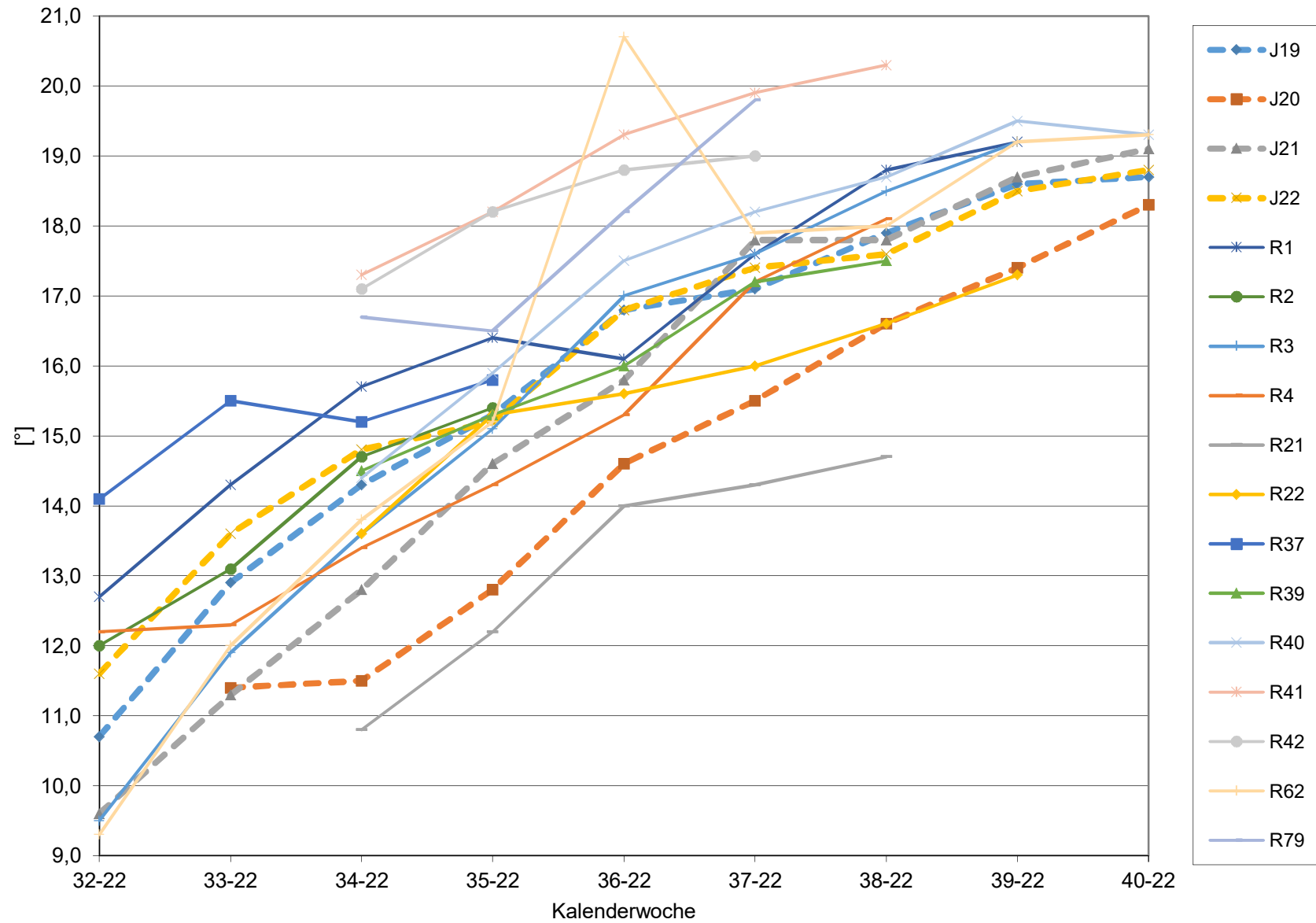
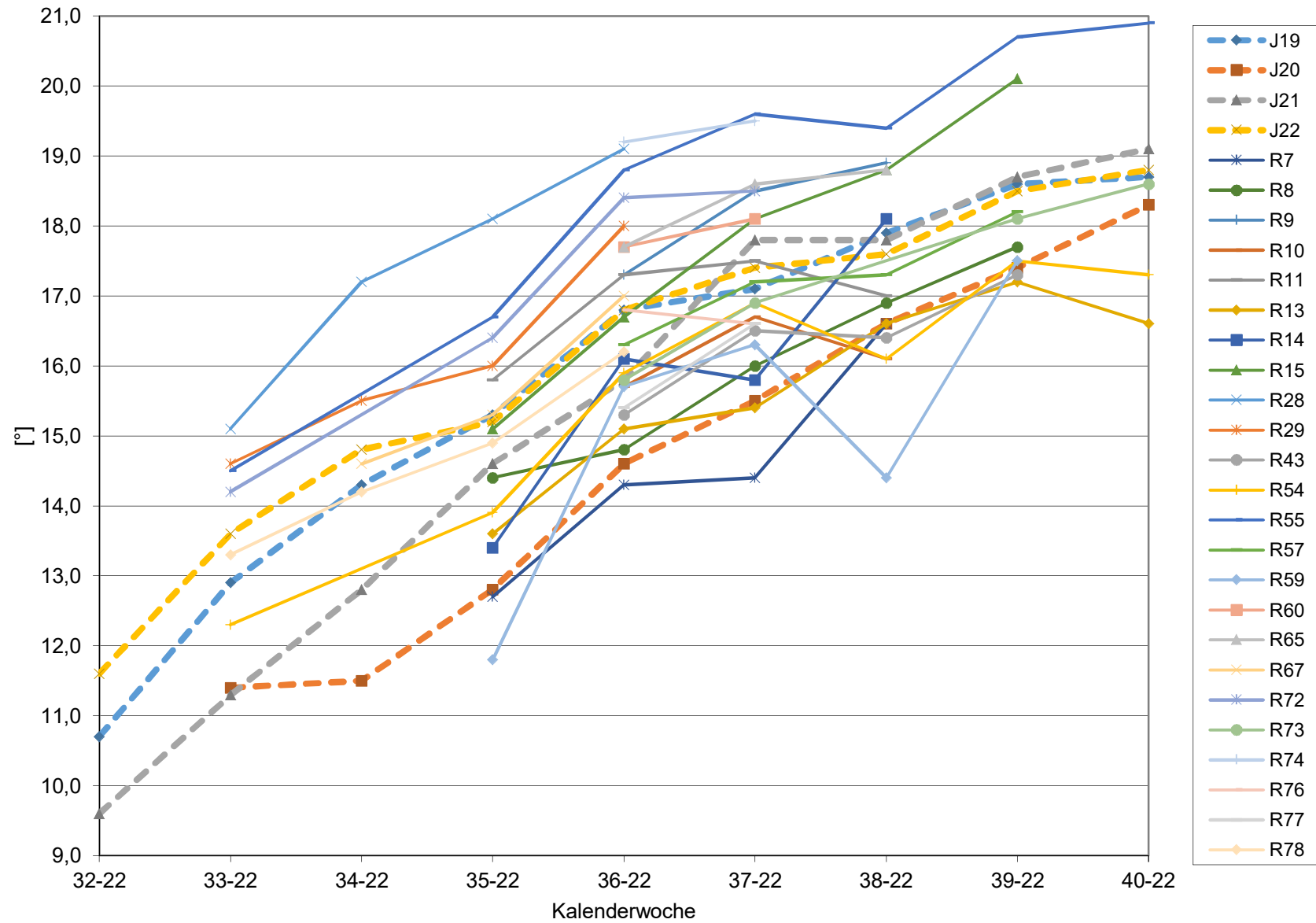


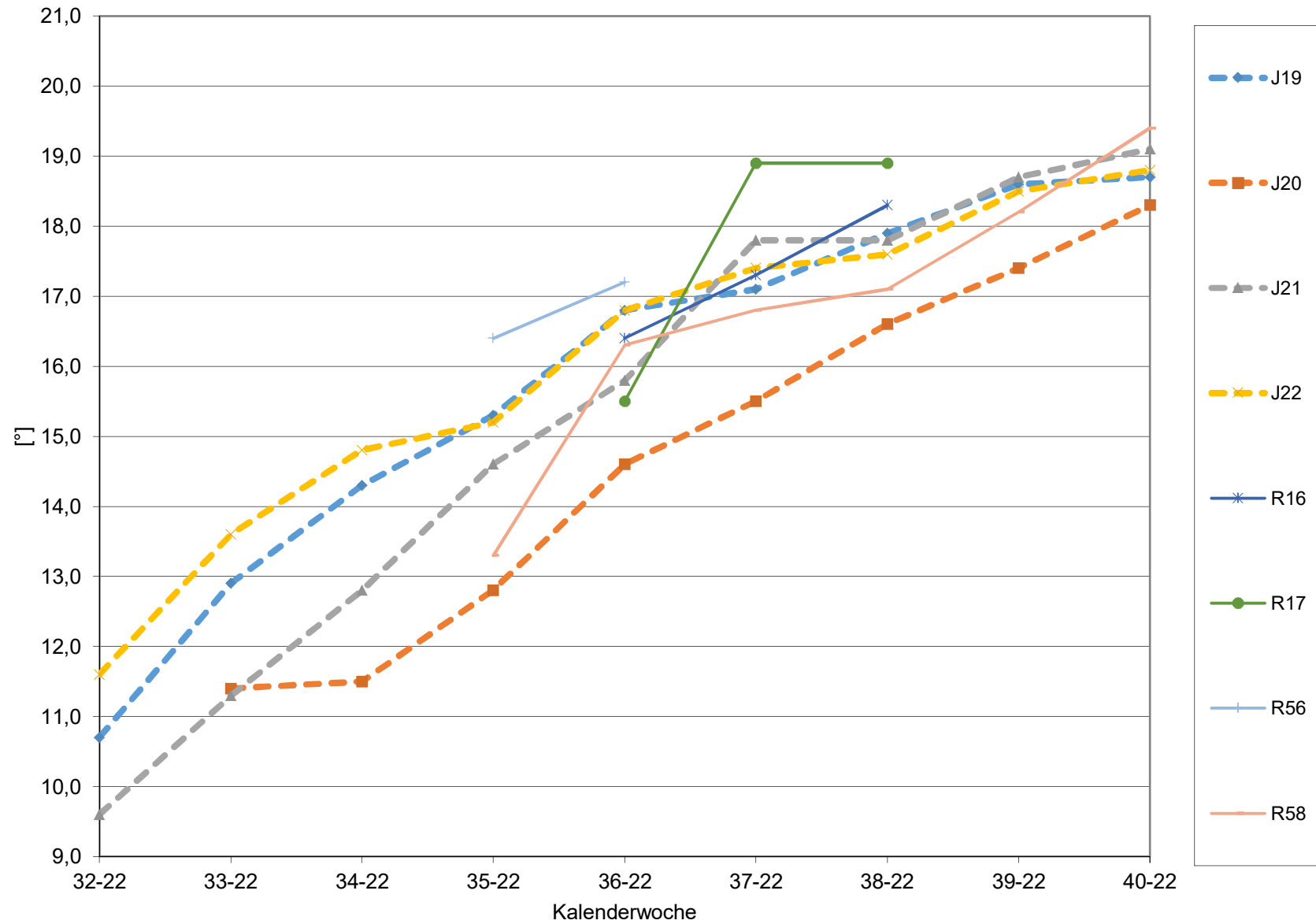
### KMW für Bgld



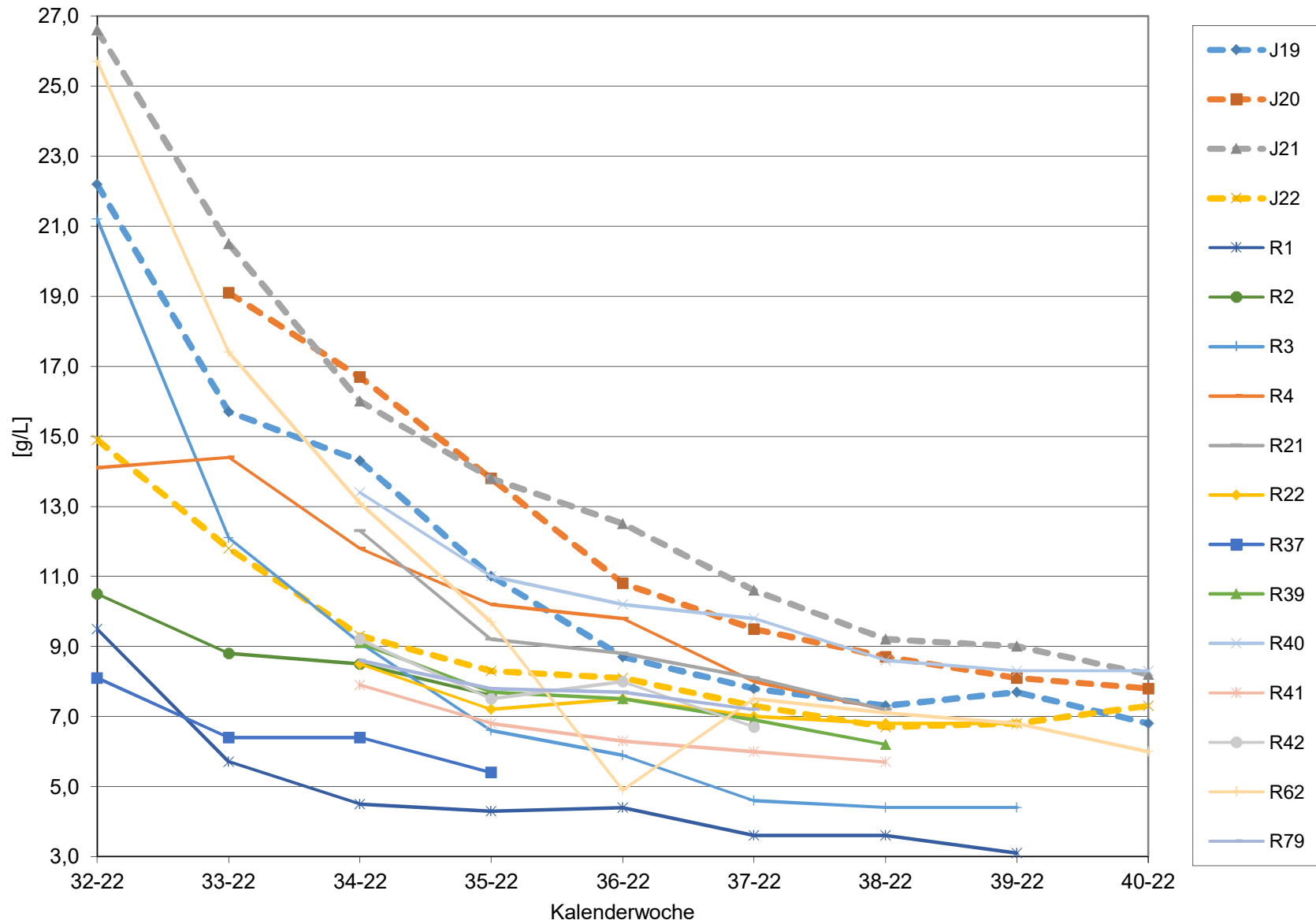
### KMW für NÖ



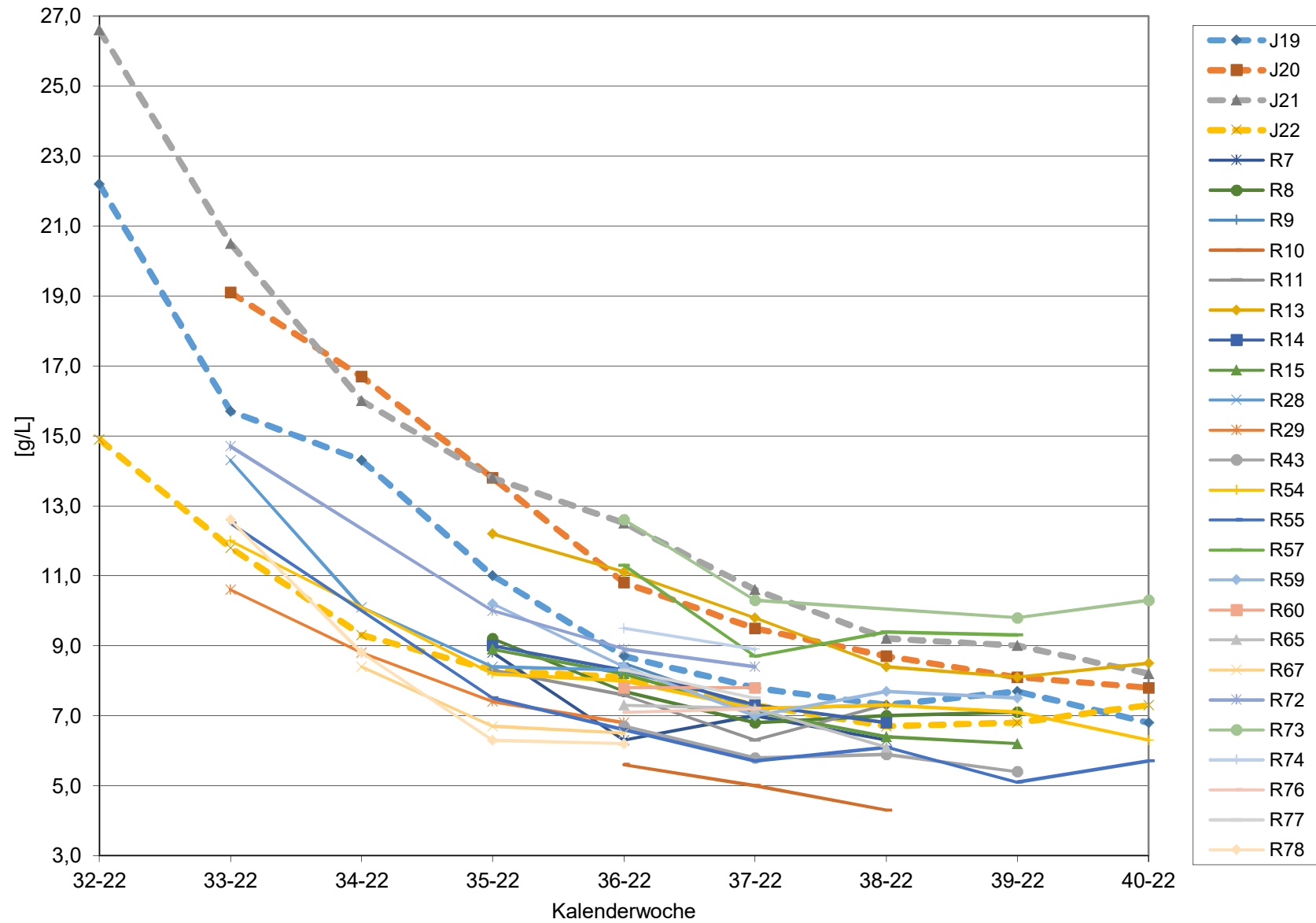
### KMW für Wien



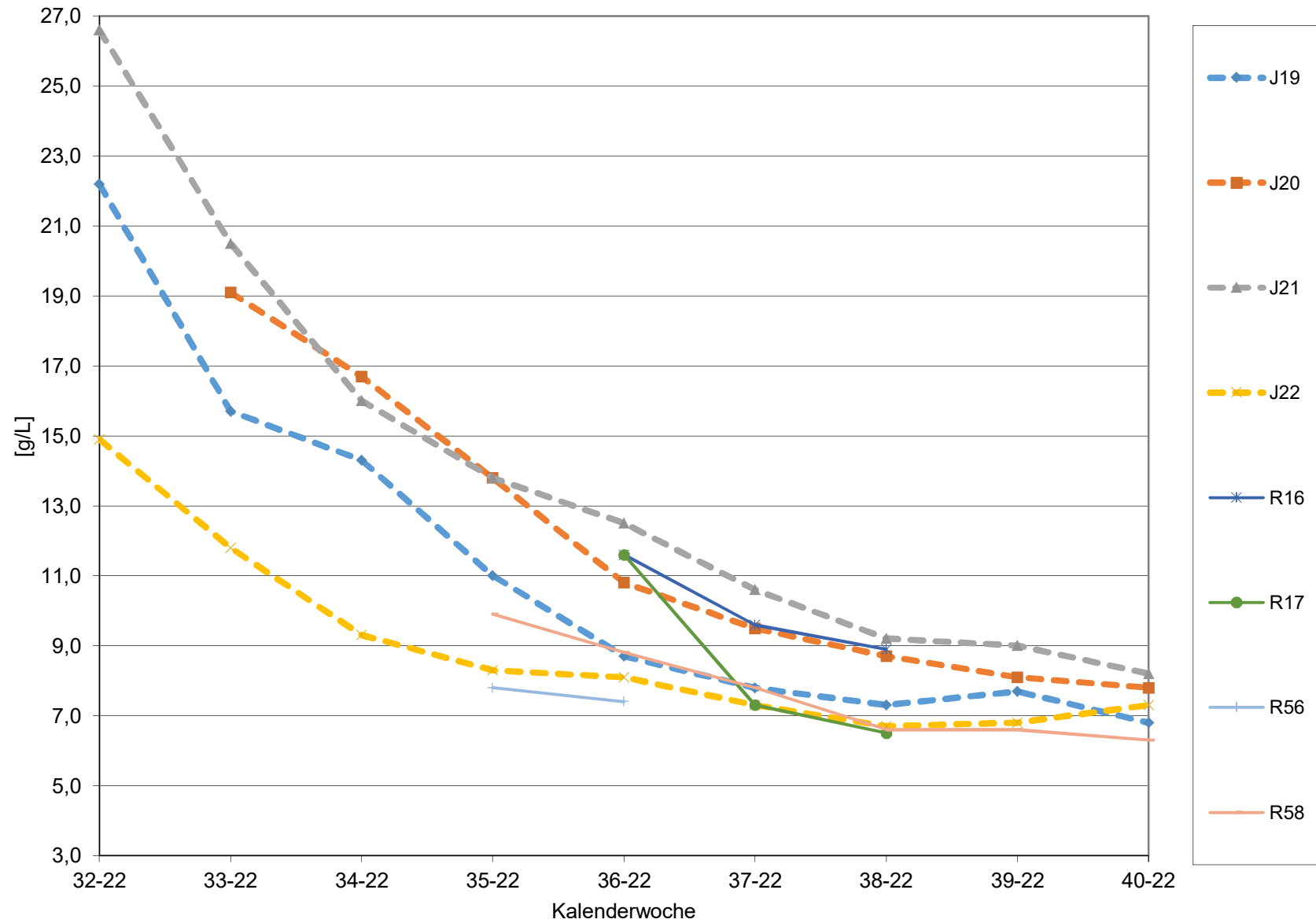
### titr. Säure für Bgld



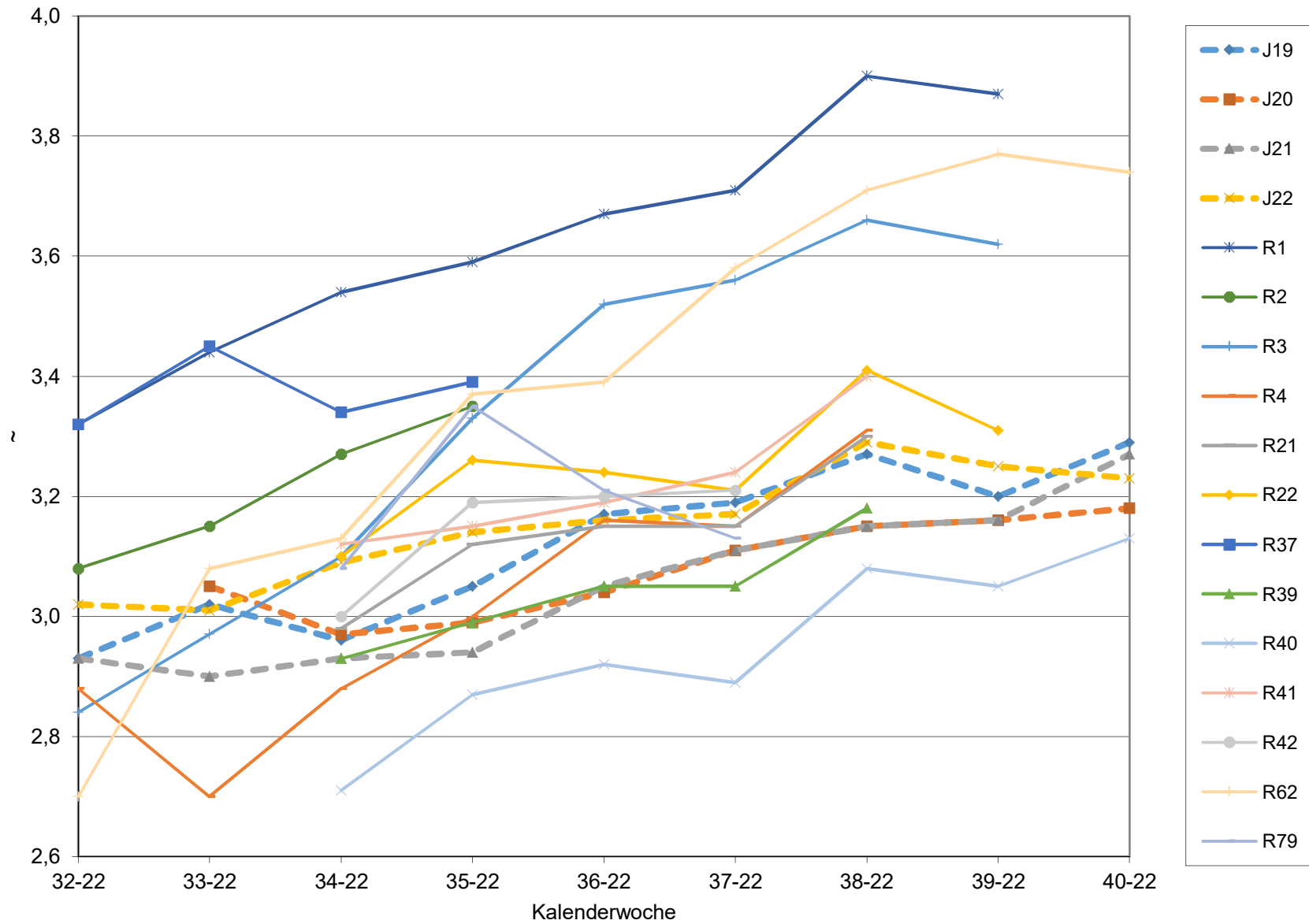
titr. Säure für NÖ



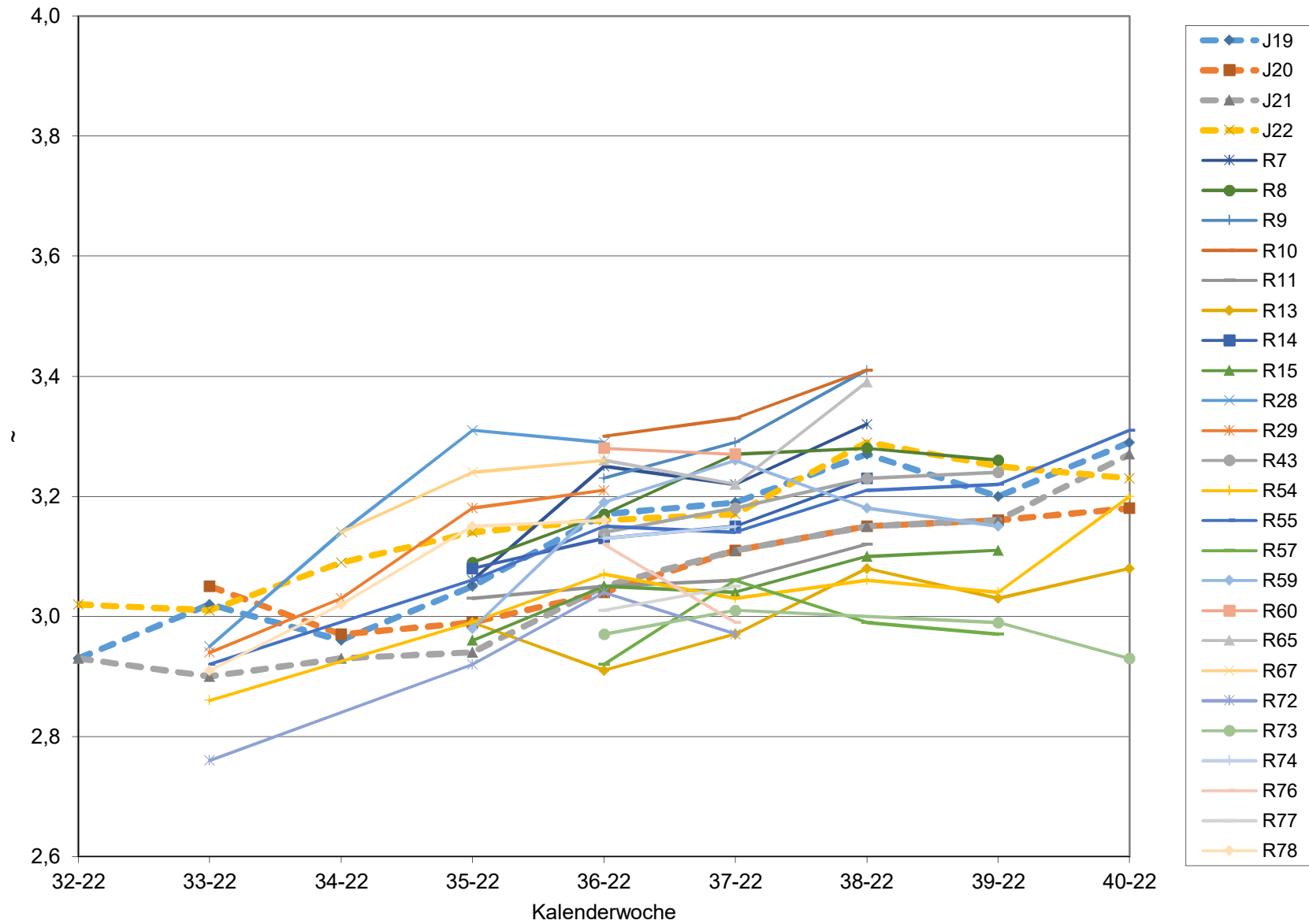
### titr. Säure für Wien



### pH für Bgld

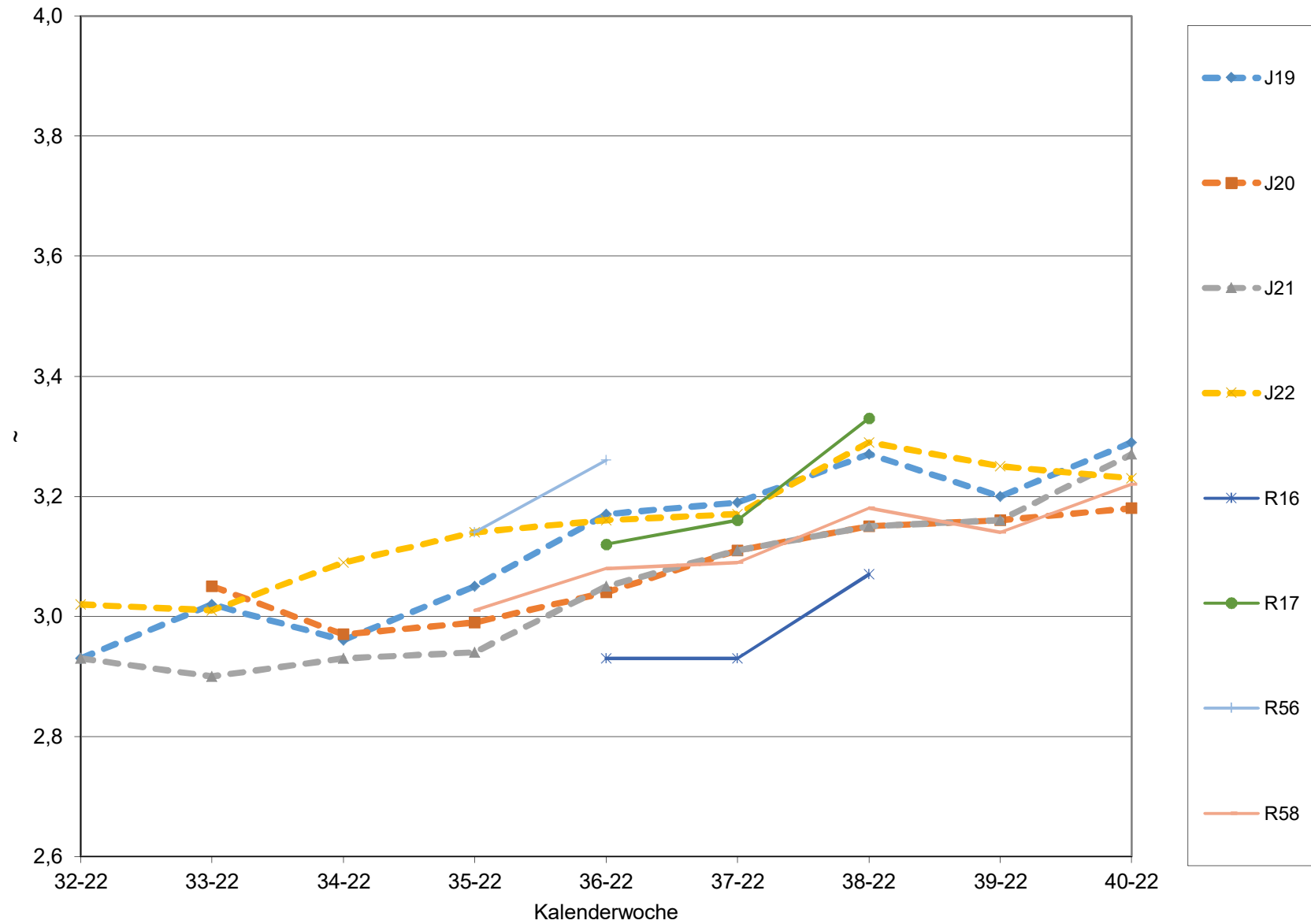


### pH für NÖ

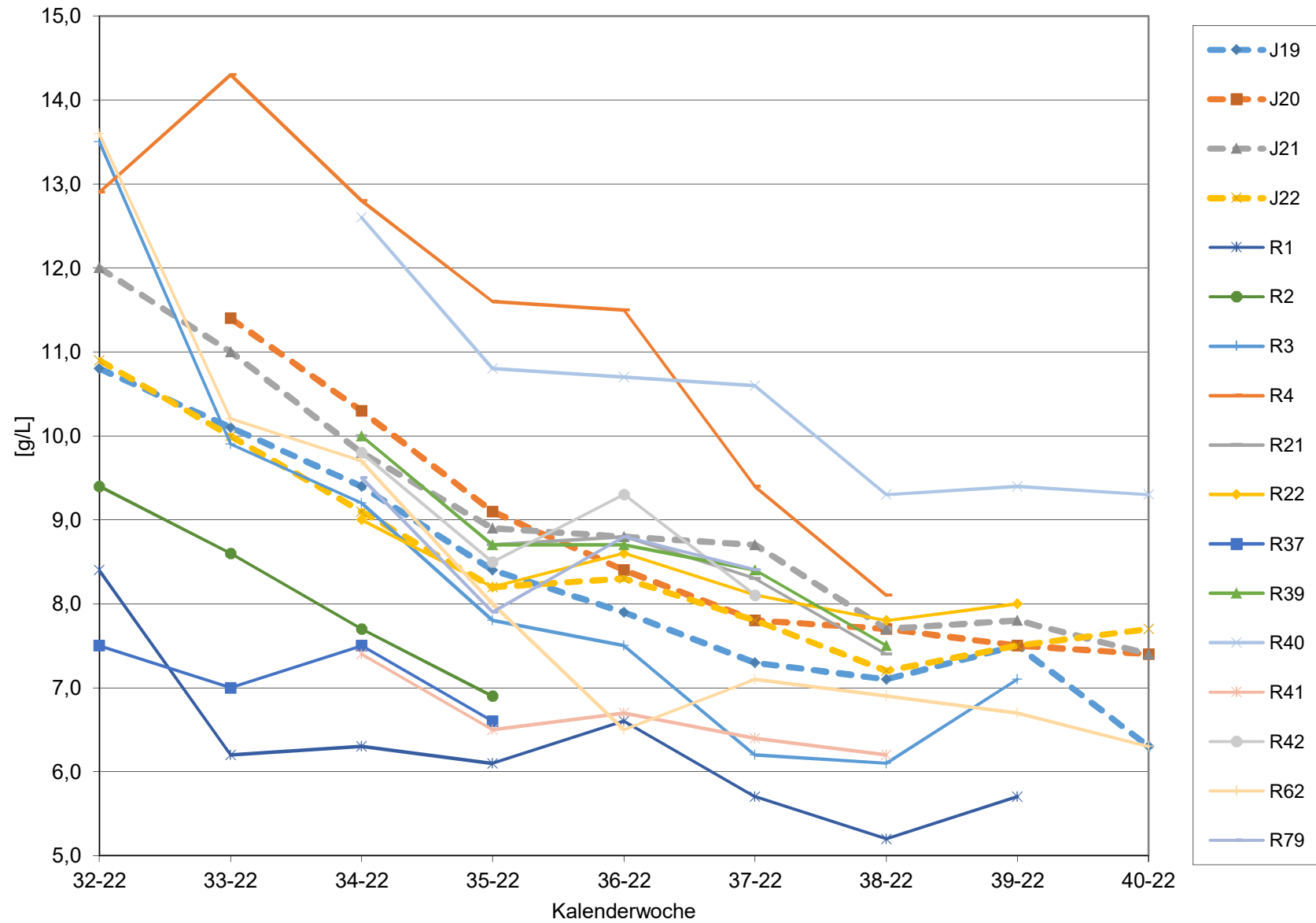




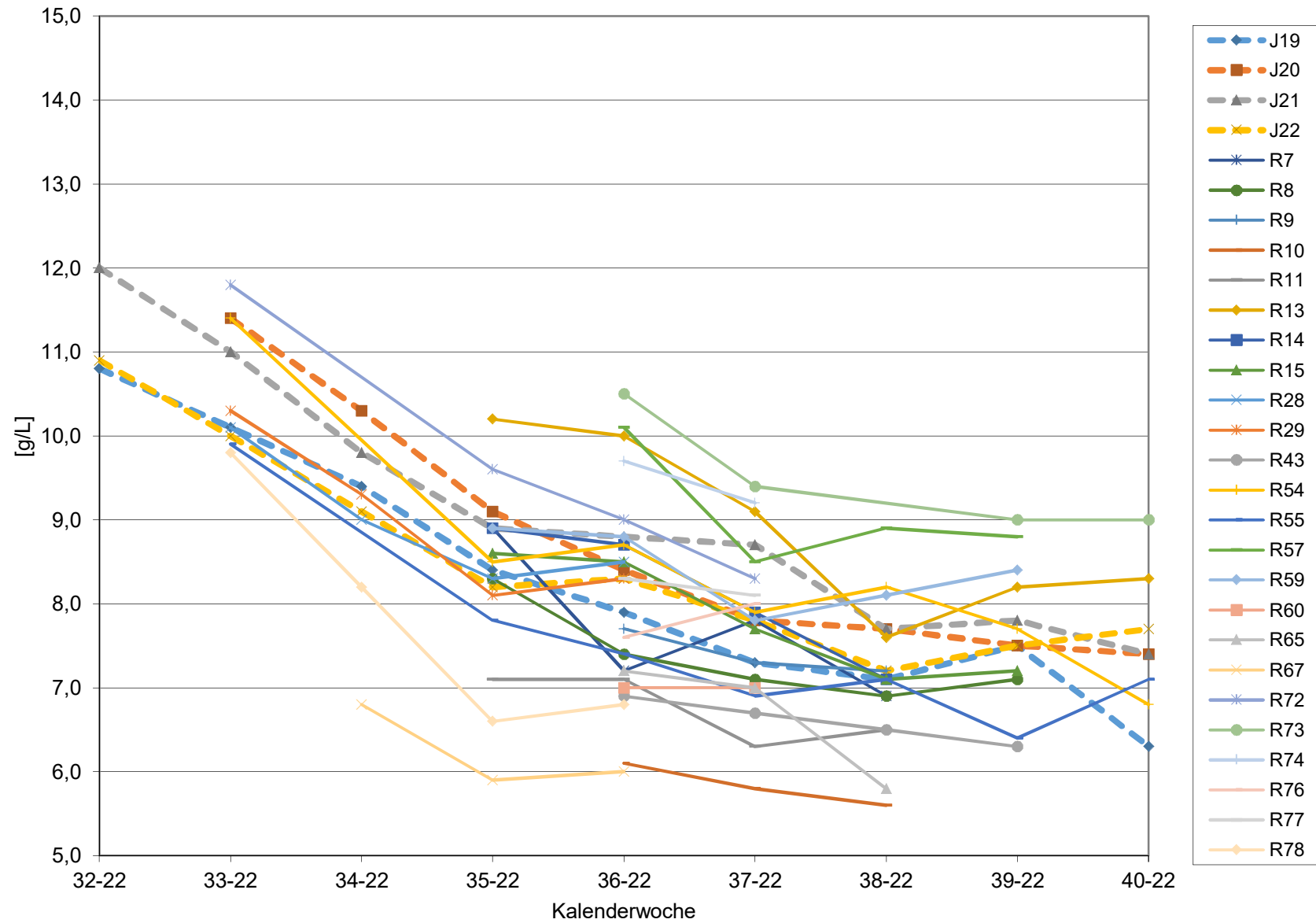
### pH für Wien



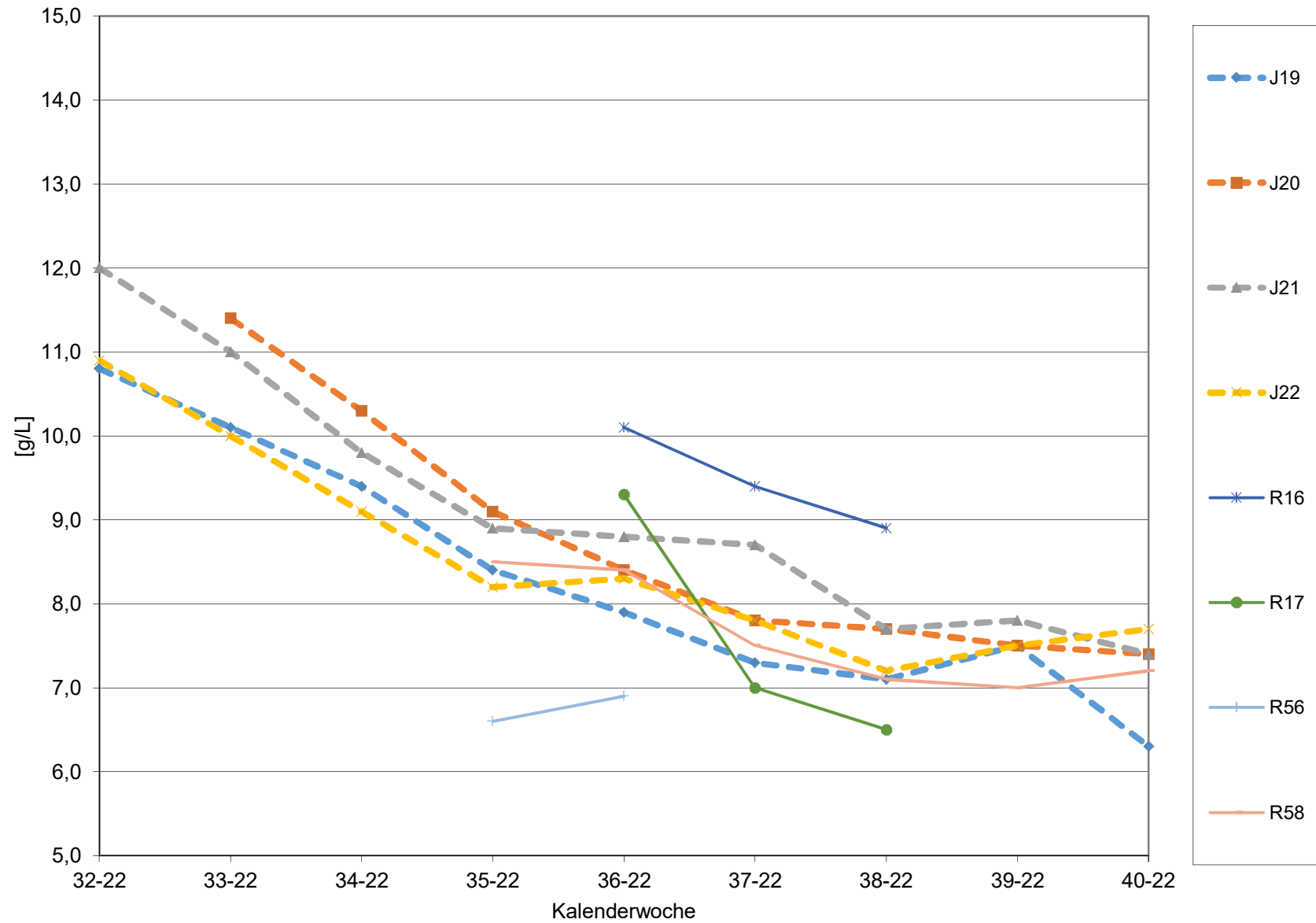
### WS für Bgld



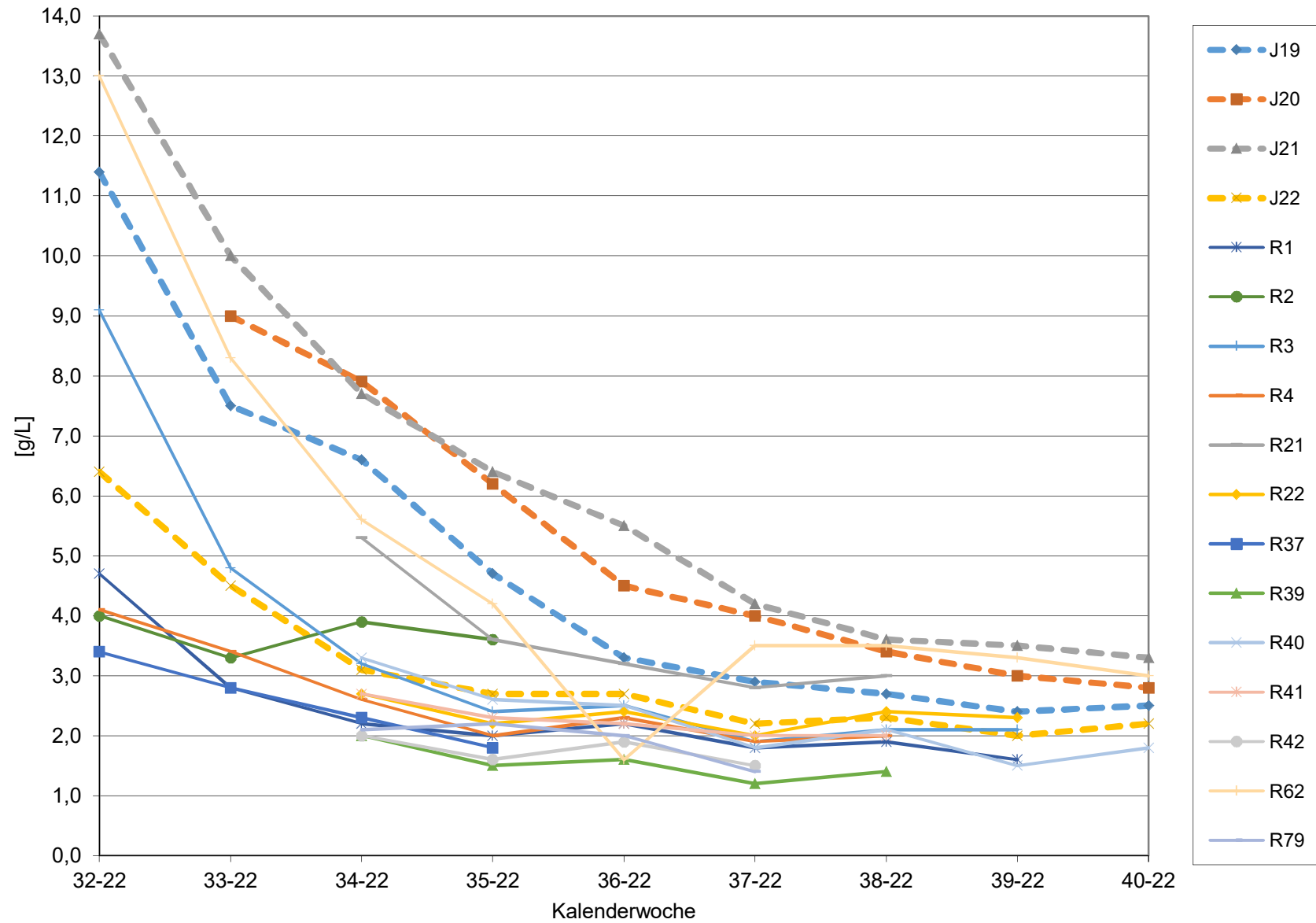
### WS für NÖ



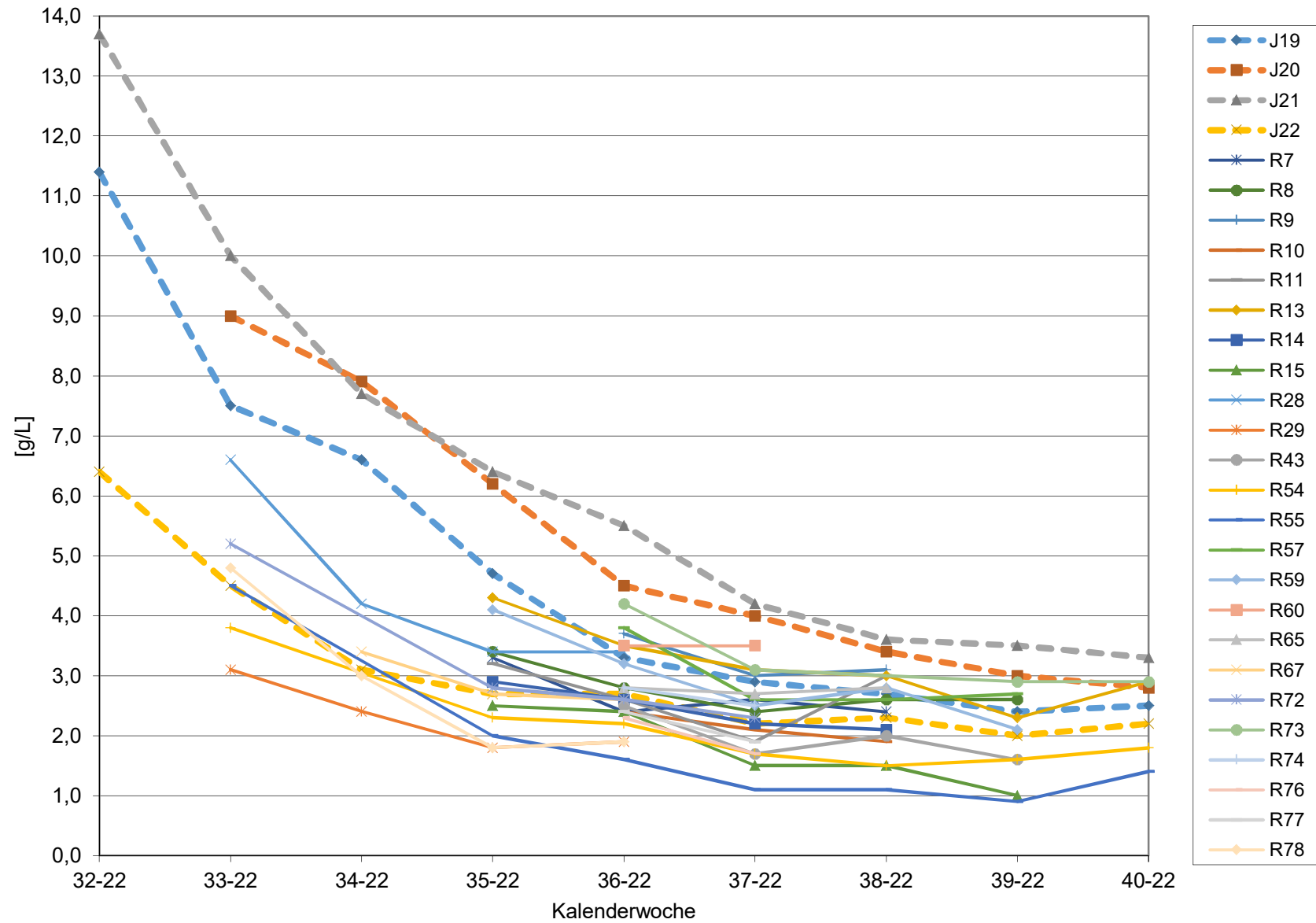
### WS für Wien



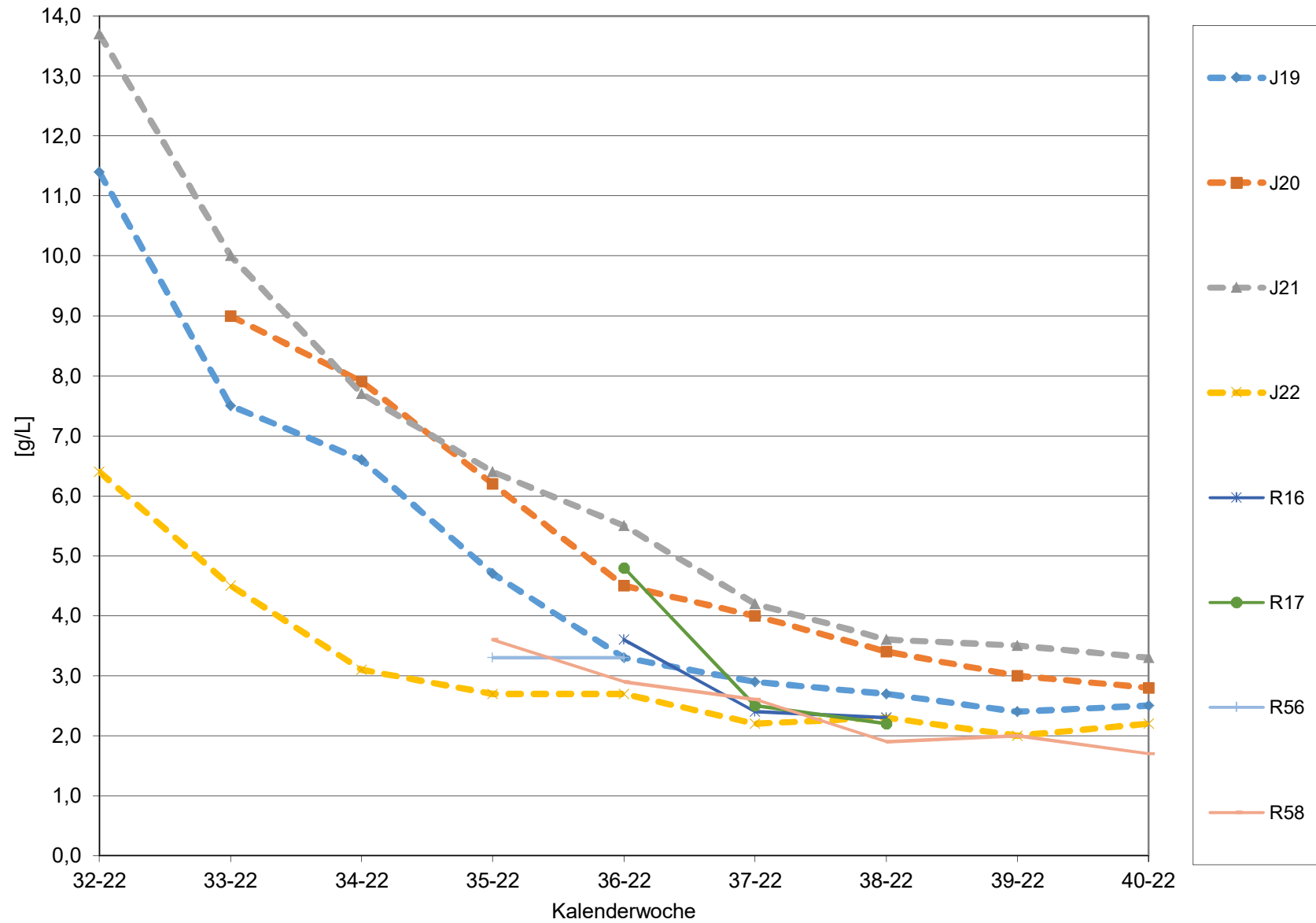
### ÄS für Bgld



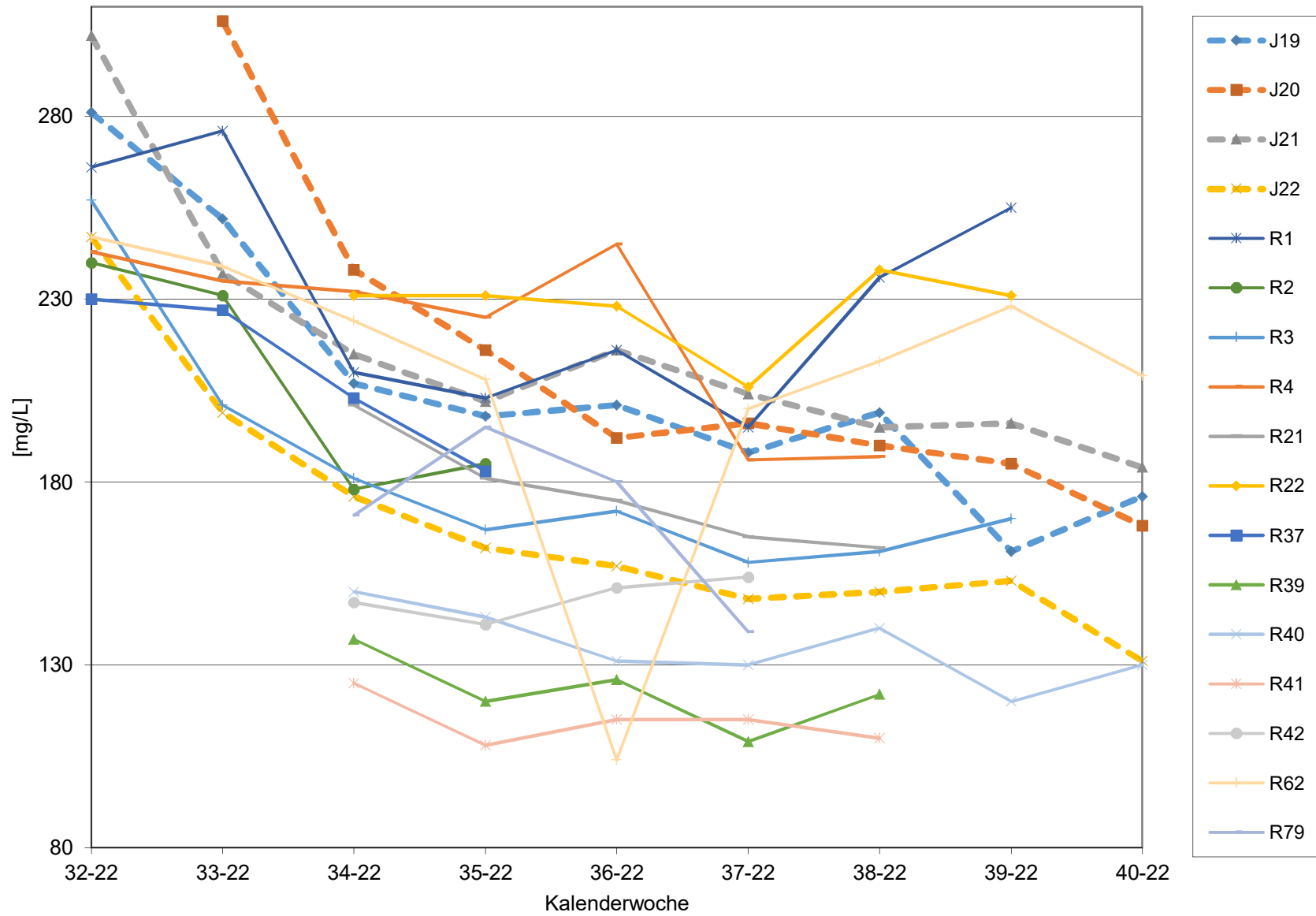
### ÄS für NÖ



### ÄS für Wien

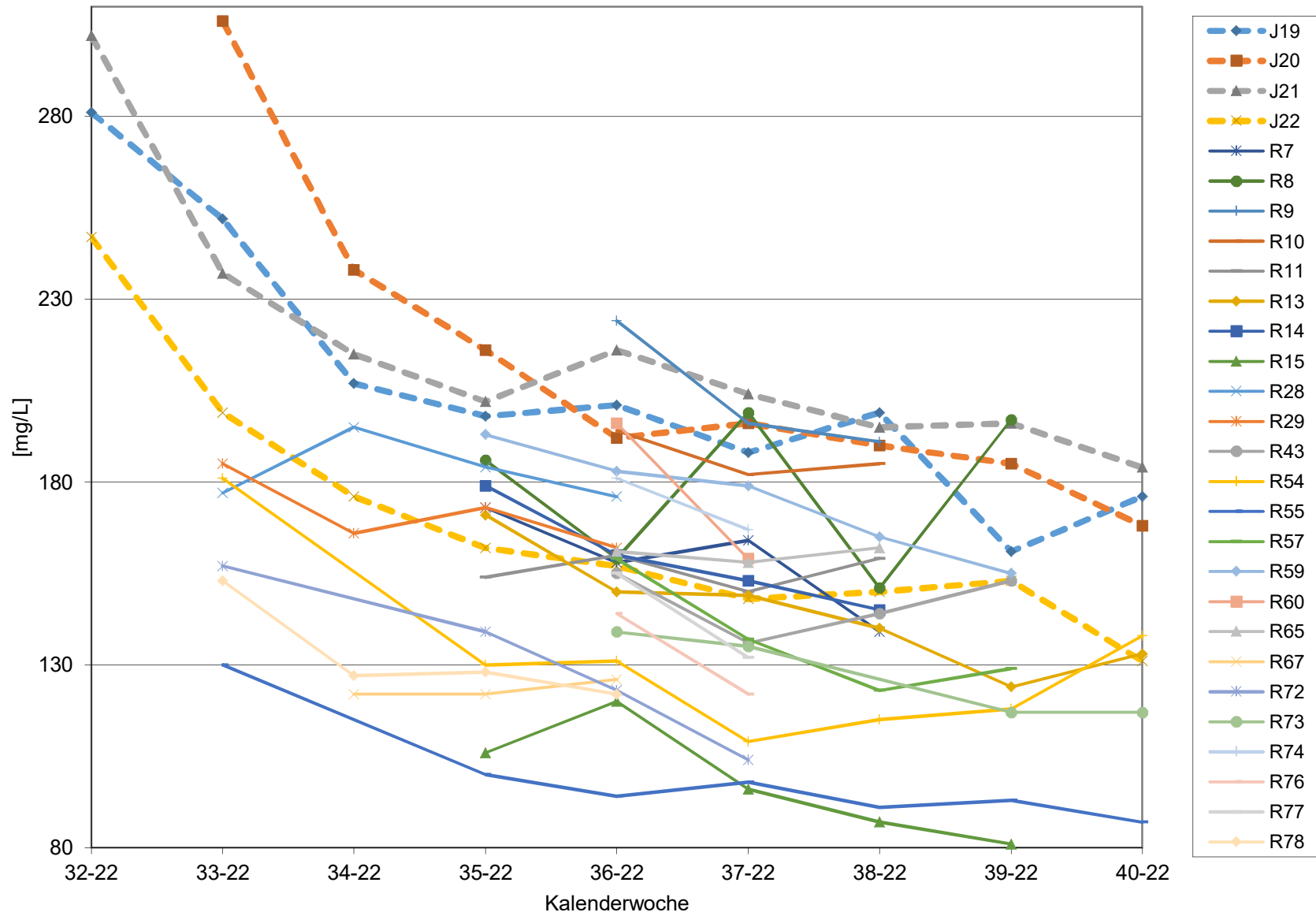


### N (OPA NAC) für Bgld





### N (OPA NAC) für NÖ



### N (OPA NAC) für Wien

